



URBAN DESIGN PROJECT DESIGNS AND CONCEPTS

The following designs are concepts that were developed for the Urban Design Project pilot cities that never made it to the construction stage. However, all of these designs are based upon units of section width and length that are common in the manufactured housing industry. Many manufacturers have expressed an interest in basing production models on these concept designs and may be willing to discuss building them for specific applications.

architects

Susan Maxman & Partners, Inc.



URBAN
DESIGN PROJECT

MANUFACTURED
HOUSING
INSTITUTE

2101 Wilson Blvd
Arlington
Virginia, 22201
Tel: 703 559-0400
Fax: 703 559-0401

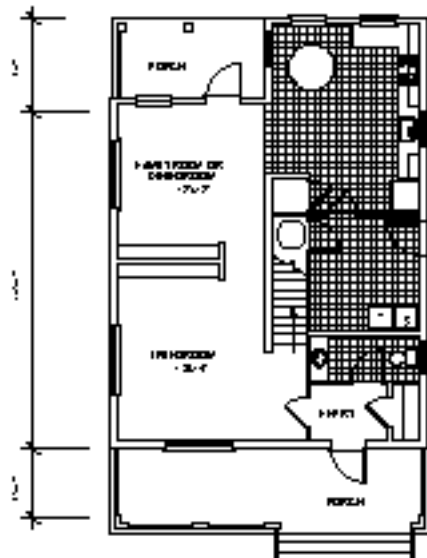
WILKINSBURG, PA



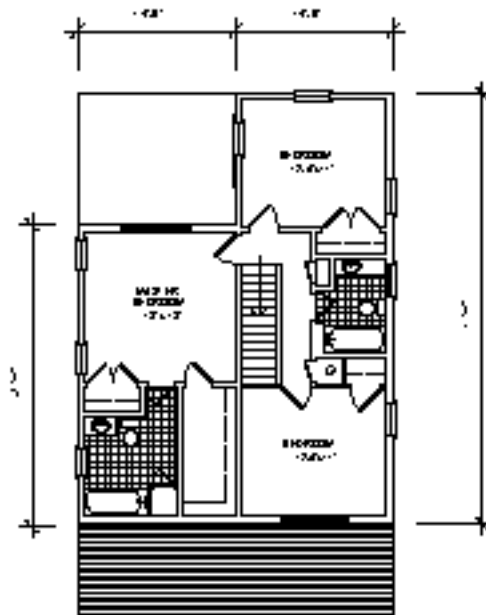
FRONT ELEVATION



SIDE ELEVATION



FIRST FLOOR PLAN



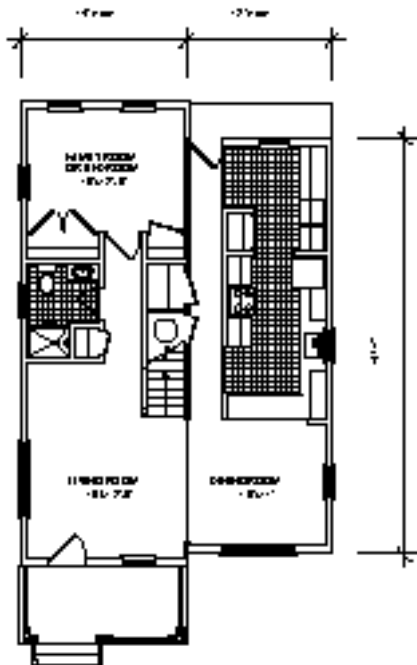
SECOND FLOOR PLAN



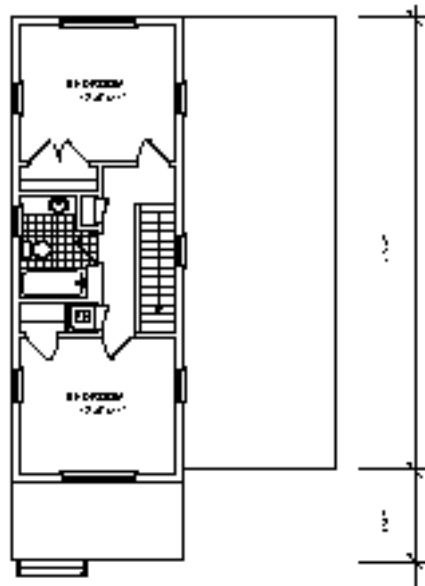
FRONT ELEVATION



SIDE ELEVATION



FIRST FLOOR PLAN



SECOND FLOOR PLAN

architects

Susan Maxman & Partners, Inc.



URBAN
DESIGN PROJECT

MANUFACTURED
HOUSING
INSTITUTE

2101 Wilson Blvd
Arlington
Virginia 22201
Tel 703 559-0400
Fax 703 559-0401

WILKINSBURG, PA

WILK	

appendix a.3

Susan Maxman & Partners
architects



MANUFACTURED HOUSING INSTITUTE
2101 Wilson Blvd
Arlington
Virginia, 22201
Tel: 703 558-0400
Fax: 703 558-0401

WASHINGTON, DC

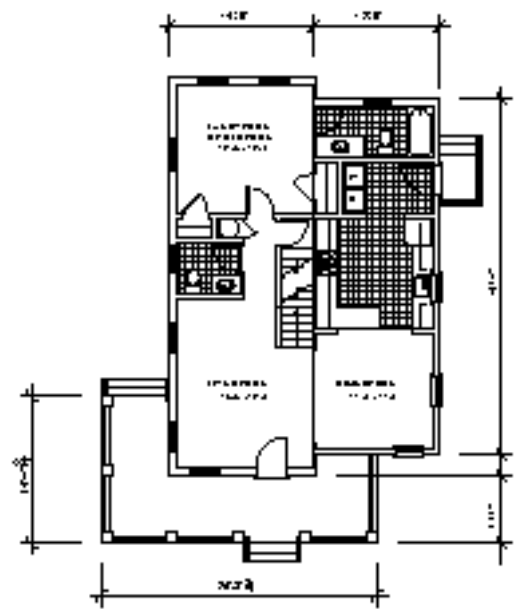
WAS I
appendix b.1



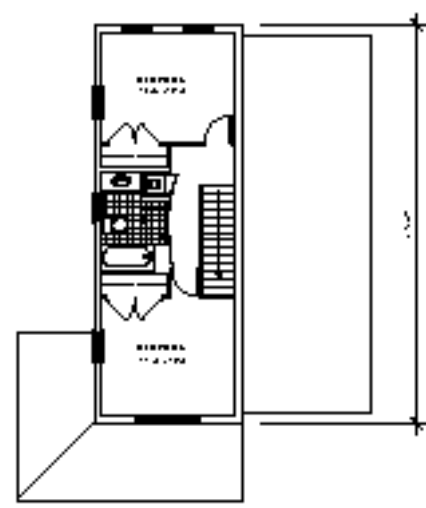
1/2" = 1'-0" PLAN



3/8" = 1'-0" PLAN



1/8" = 1'-0" PLAN



3/8" = 1'-0" PLAN

architects

Susan Maxman & Partners, Inc.

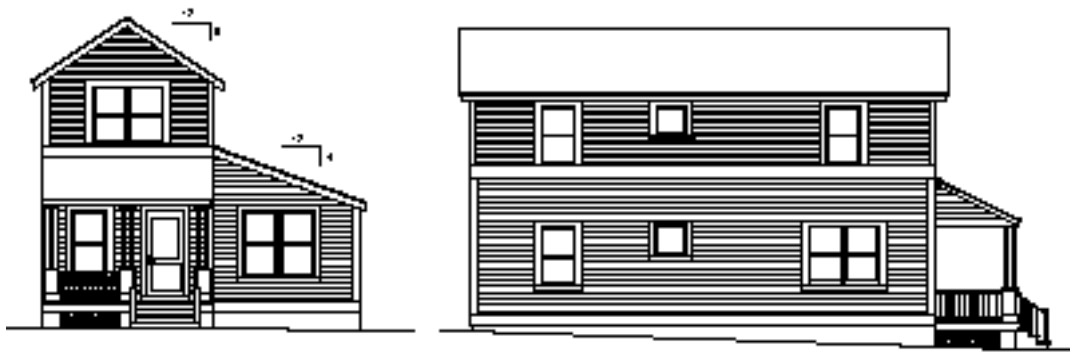


URBAN
DESIGN PROJECT

MANUFACTURED
HOUSING
INSTITUTE

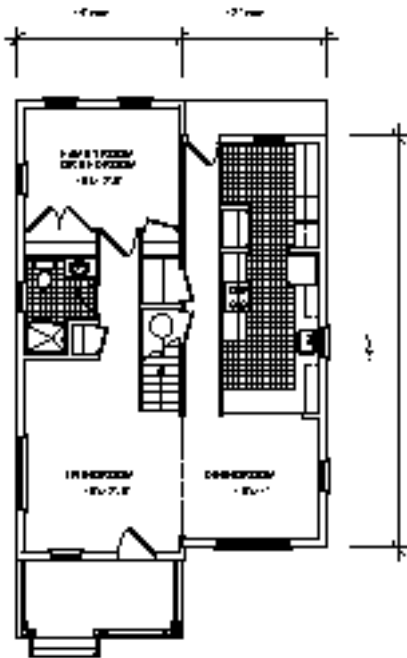
2101 Wilson Blvd
Arlington
Virginia, 22201
Tel: 703 558-0400
Fax: 703 558-0401

WASHINGTON, DC

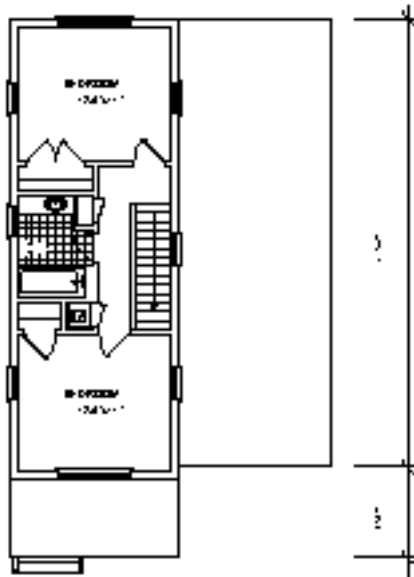


FRONT ELEVATION

SIDE ELEVATION



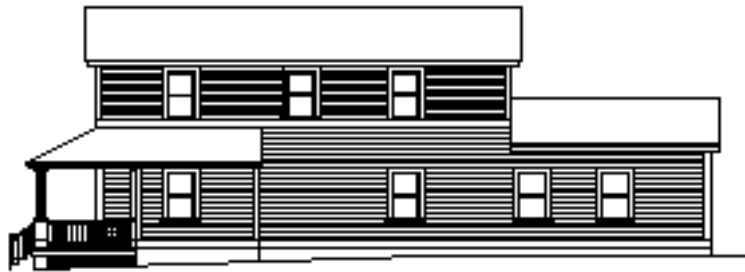
FIRST FLOOR PLAN



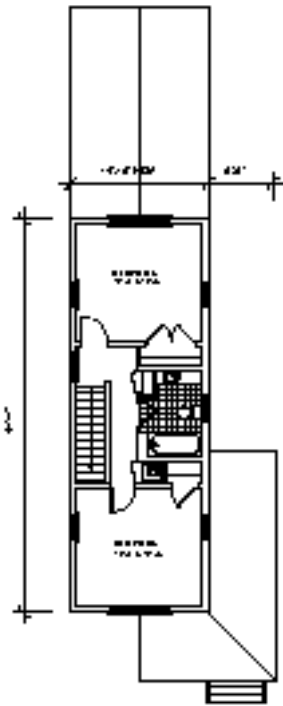
SECOND FLOOR PLAN



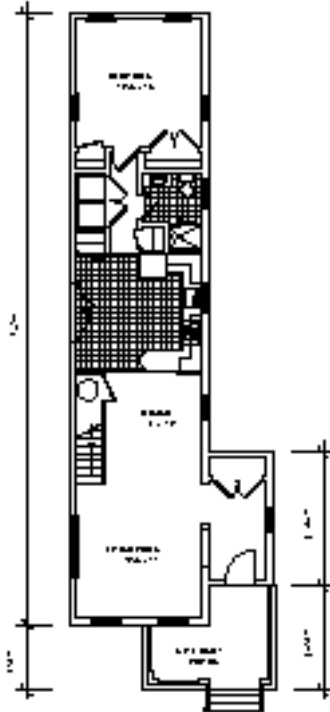
1 FRONT ELEVATION



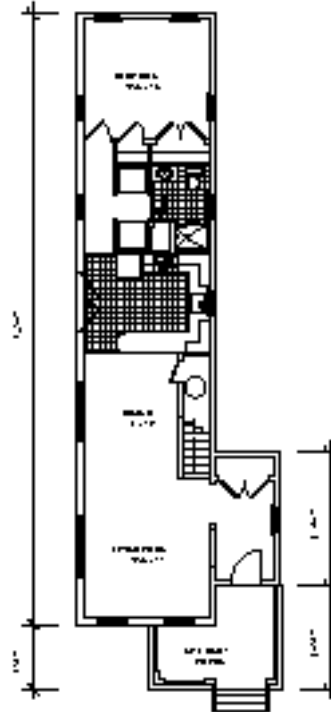
2 REAR ELEVATION



3 SECOND FLOOR PLAN



4 FIRST FLOOR PLAN #1



5 FIRST FLOOR PLAN #2

Susan Maxman & Partners
architects



MANUFACTURED
HOUSING
INSTITUTE

2101 Wilson Blvd
Arlington
Virginia 22201
Tel 703 550-0400
Fax 703 550-0401

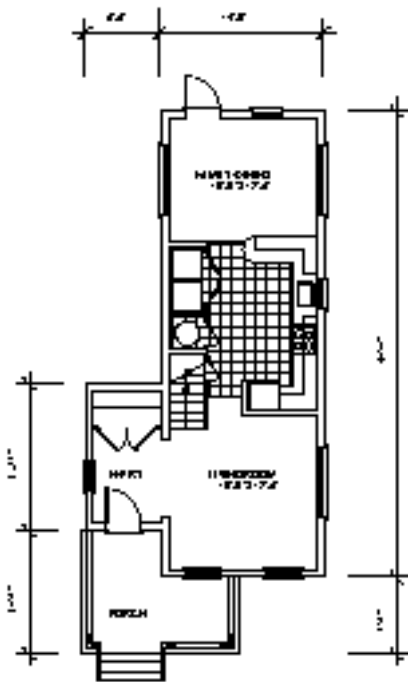
WASHINGTON, DC



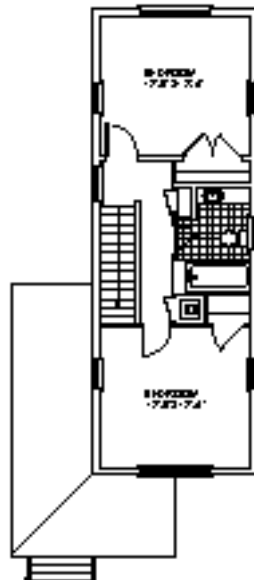
FRONT ELEVATION



SIDE ELEVATION



FIRST FLOOR PLAN



SECOND FLOOR PLAN

architects

Susan Maxman & Partners, Inc.



URBAN
DESIGN PROJECT

MANUFACTURED
HOUSING
INSTITUTE

2101 Wilson Blvd
Arlington
Virginia, 22201
Tel: 703 558-0400
Fax: 703 558-0401

WASHINGTON, DC

WASHINGTON

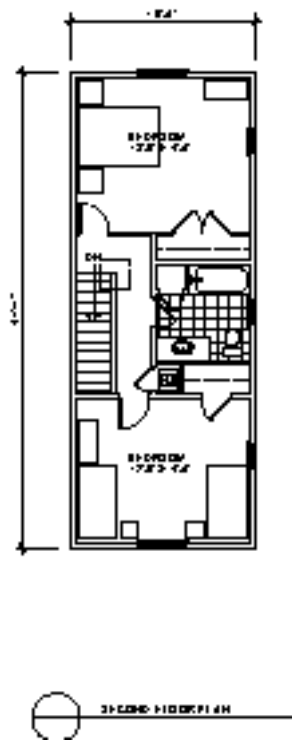
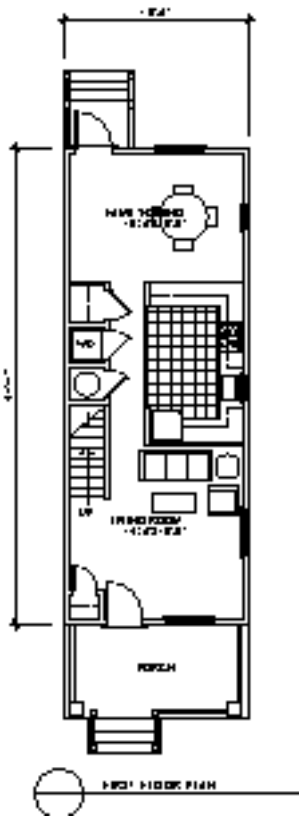
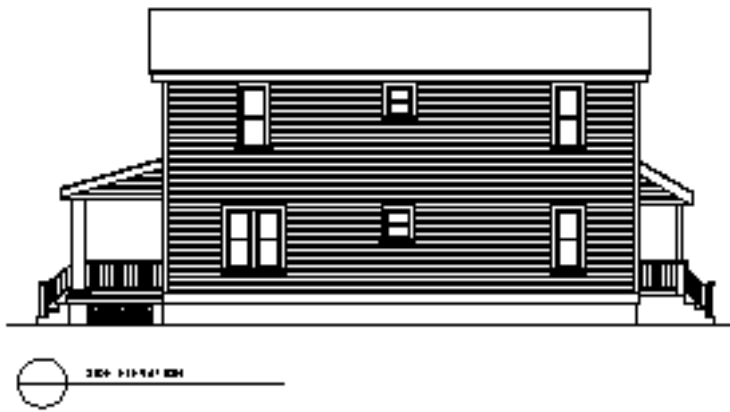
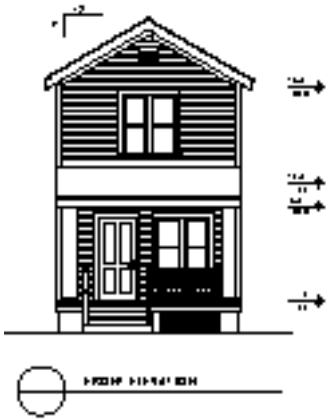
appendix b.4

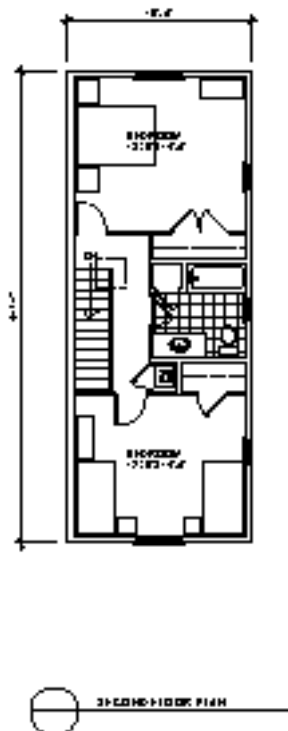
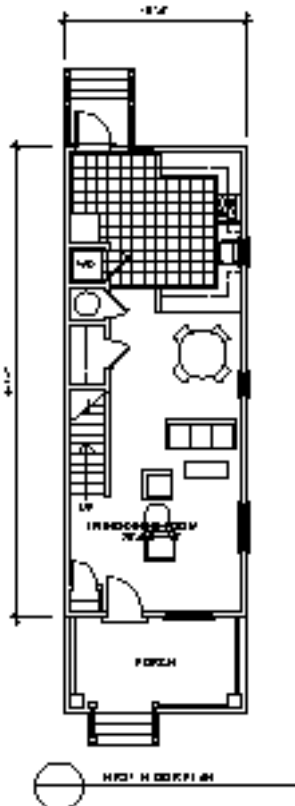
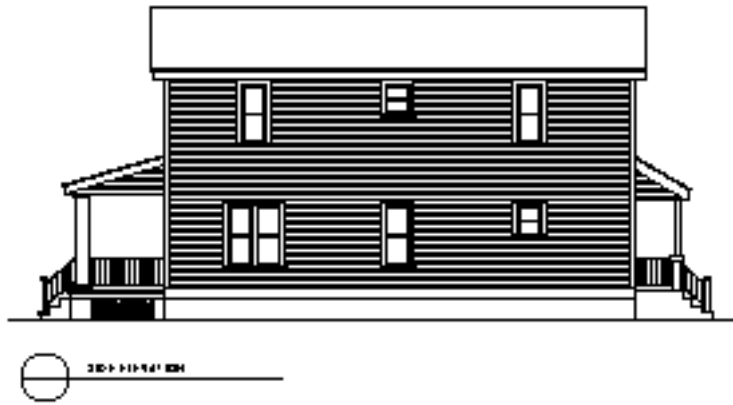
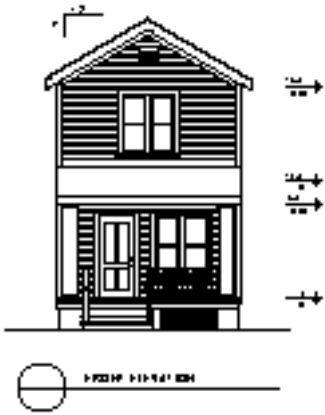
Susan Maxman & Partners
architects



MANUFACTURED
HOUSING
INSTITUTE
2101 Wilson Blvd
Arlington
Virginia 22201
Tel 703 559-0400
Fax 703 559-0401

LOUISVILLE, KY





architects

Susan Maxman & Partners inc



URBAN
DESIGN PROJECT

MANUFACTURED
HOUSING
INSTITUTE

2101 Wilson Blvd
Arlington
Virginia, 22201
Tel 703 559-0400
Fax 703 559-0401

LOUISVILLE, KY

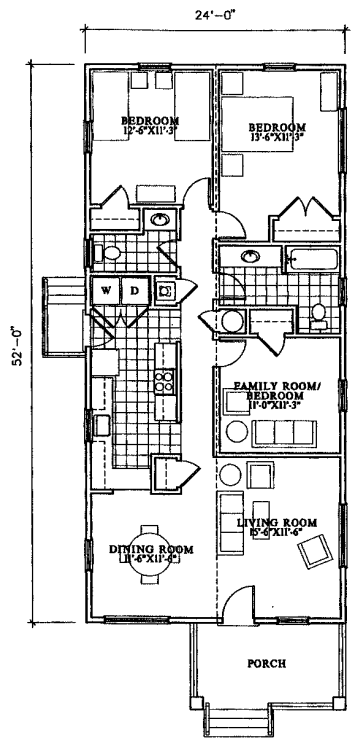
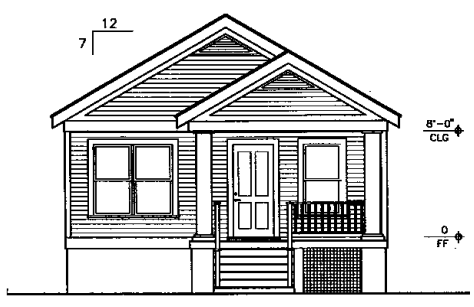
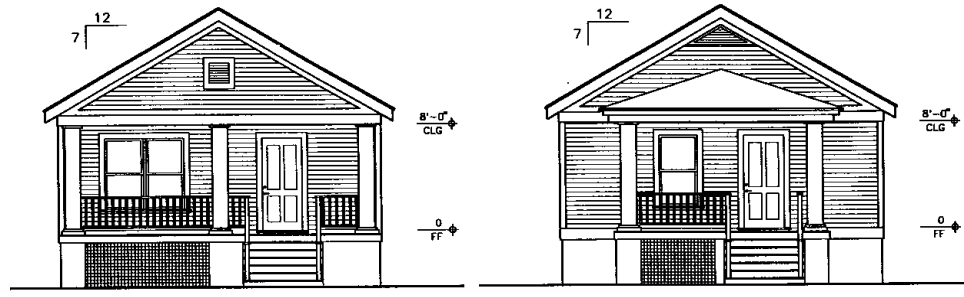
appendix c.3

Susan Maxman & Partners architects



MANUFACTURED HOUSING INSTITUTE
 2101 Wilson Blvd
 Arlington
 Virginia 22201
 Tel 703 559-0400
 Fax 703 559-0401

LOUISVILLE, KY



architects

Susan Maxman & Partners, Inc.



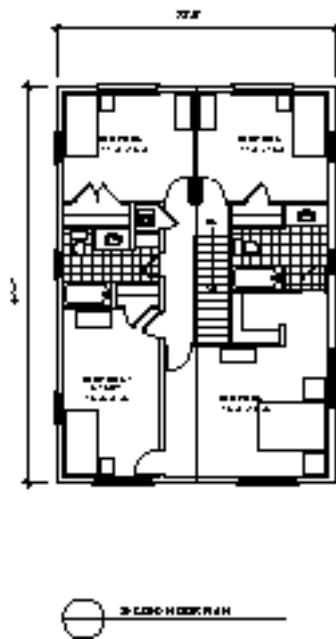
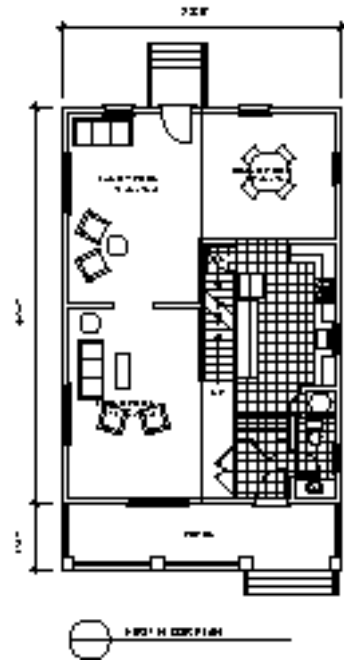
MANUFACTURED
HOUSING
INSTITUTE

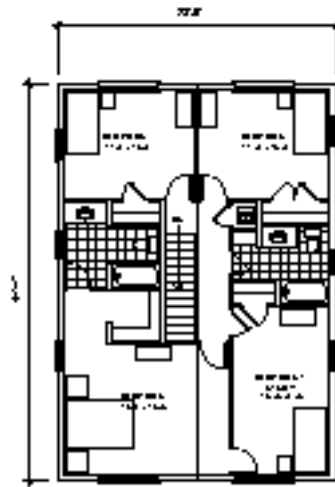
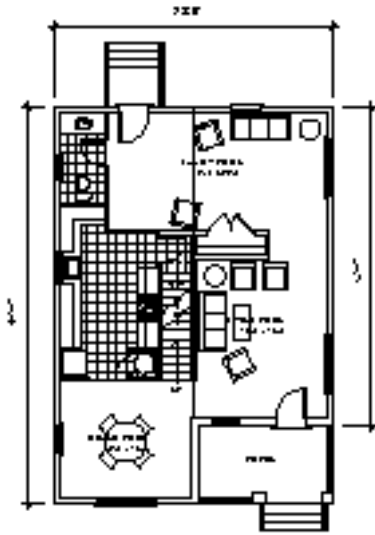
2101 Wilson Blvd
Arlington
Virginia, 22201
Tel: 703 558-0400
Fax: 703 558-0401

MILWAUKEE, WI

MILV

appendix d.1





Susan Maxman & Partners
architects



MANUFACTURED
HOUSING
INSTITUTE
2101 Wilson Blvd
Arlington
Virginia, 22201
Tel: 703 558-0400
Fax: 703 558-0401

MILWAUKEE, WI

MILV
MILV
appendix d.2

architects

Susan Maxman & Partners, Inc.

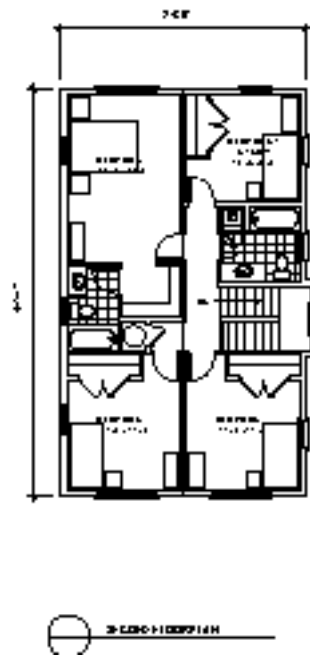
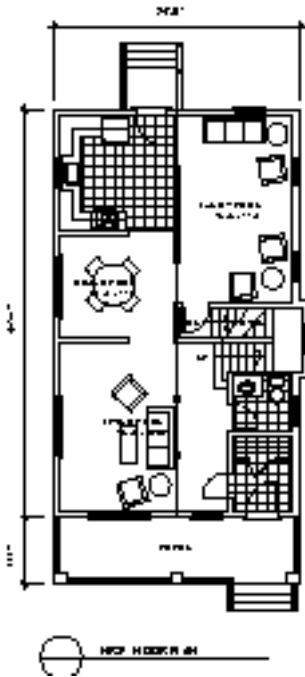
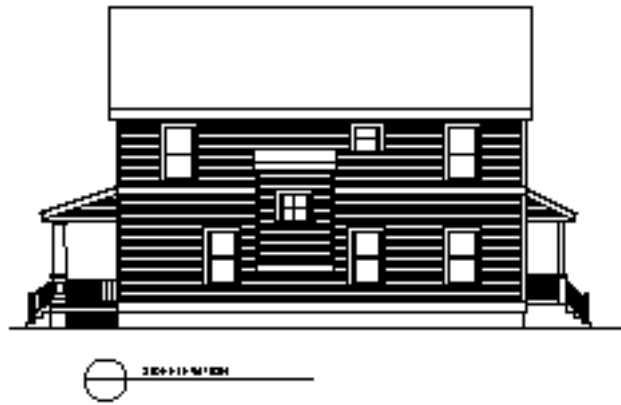


URBAN
DESIGN PROJECT

MANUFACTURED
HOUSING
INSTITUTE

2101 Wilson Blvd
Arlington
Virginia, 22201
Tel: 703 558-0400
Fax: 703 558-0401

MILWAUKEE, WI



architects

Susan Maxman & Partners Inc.

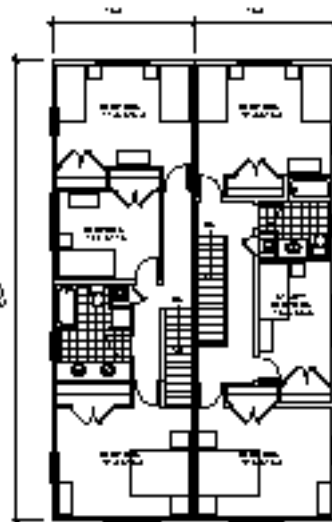
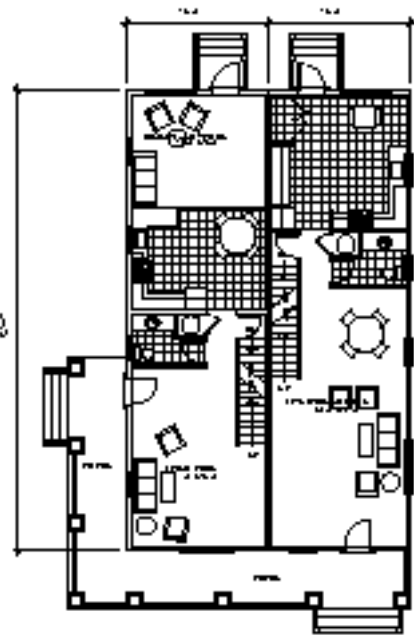


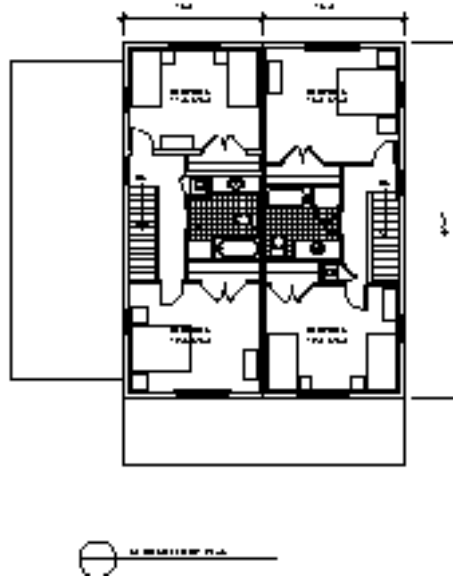
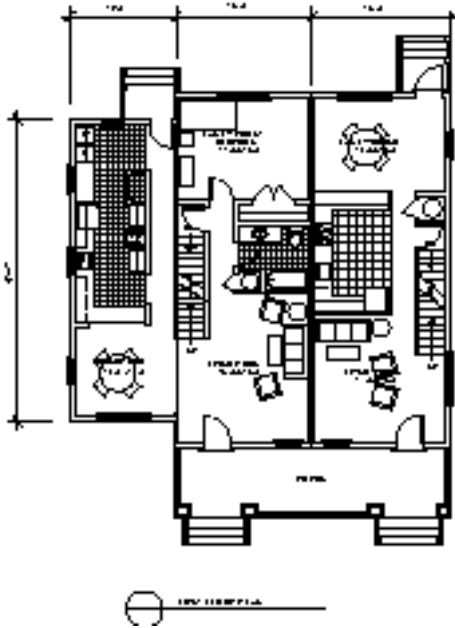
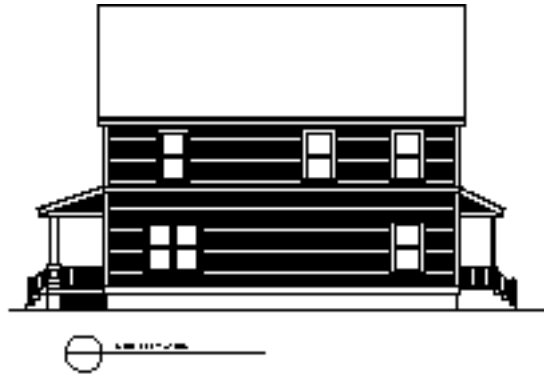
URBAN
DESIGN PROJECT

MANUFACTURED
HOUSING
INSTITUTE

2101 Wilson Blvd
Arlington
Virginia, 22201
Tel: 703 558-0400
Fax: 703 558-0401

MILWAUKEE, WI





Susan Maxman & Partners
architects

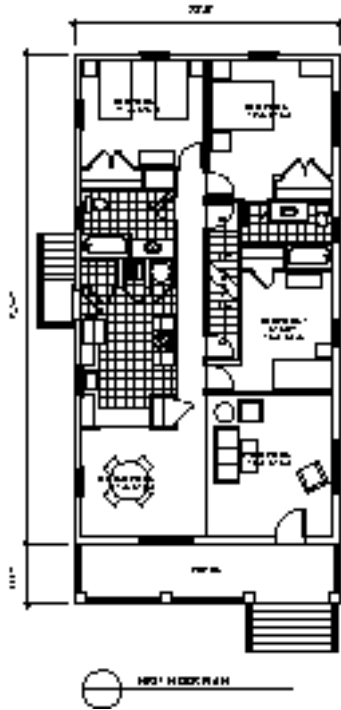
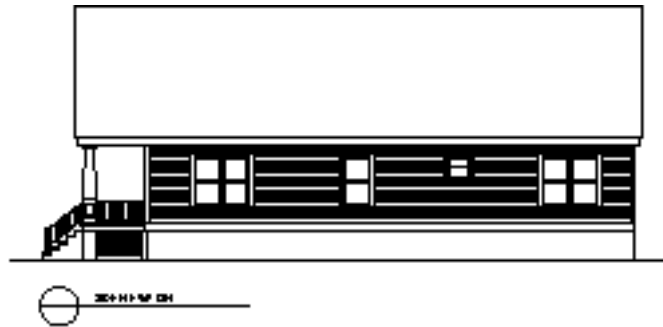
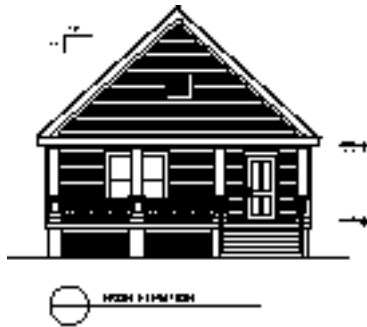


MANUFACTURED
HOUSING
INSTITUTE
2101 Wilson Blvd
Arlington
Virginia, 22201
Tel: 703 550-0400
Fax: 703 550-0401

MILWAUKEE, WI

MILWAUKEE	MILWAUKEE

appendix d.8



architects

Susan Maxman & Partners, Inc.

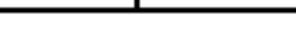
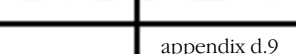
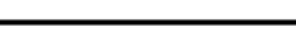
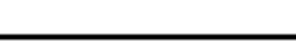


URBAN
DESIGN PROJECT

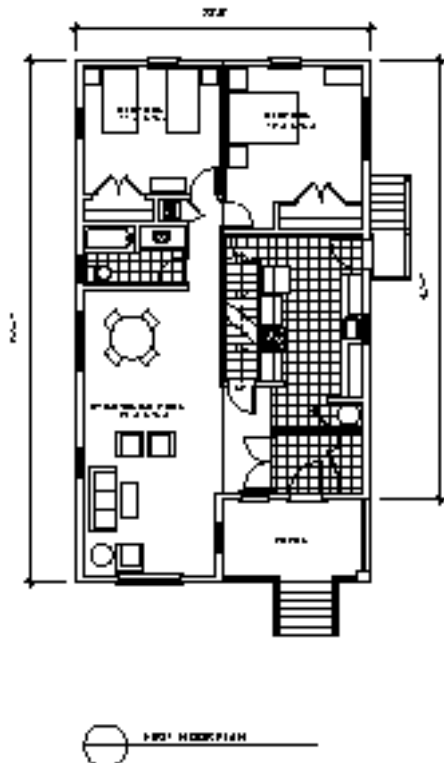
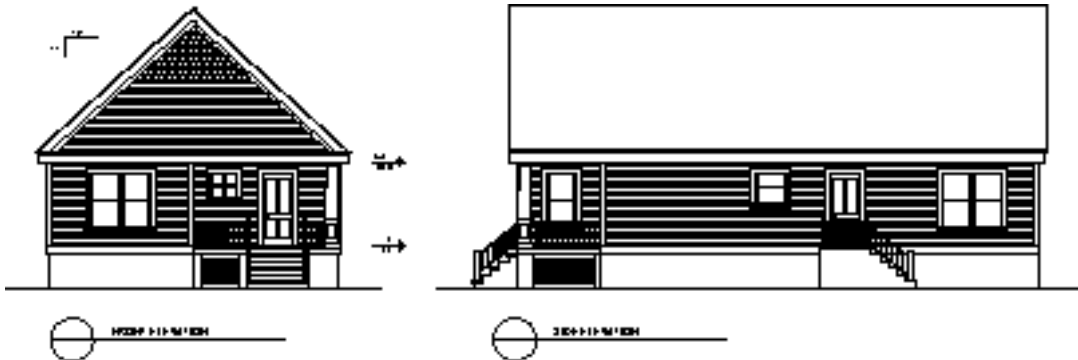
MANUFACTURED
HOUSING
INSTITUTE

2101 Wilson Blvd
Arlington
Virginia, 22201
Tel 703 558-0400
Fax 703 558-0401

MILWAUKEE, WI



appendix d.9



architects

Susan Maxman & Partners, Inc.

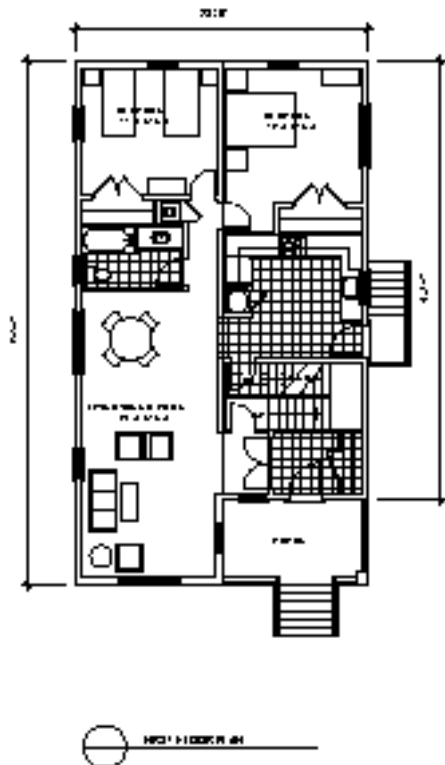
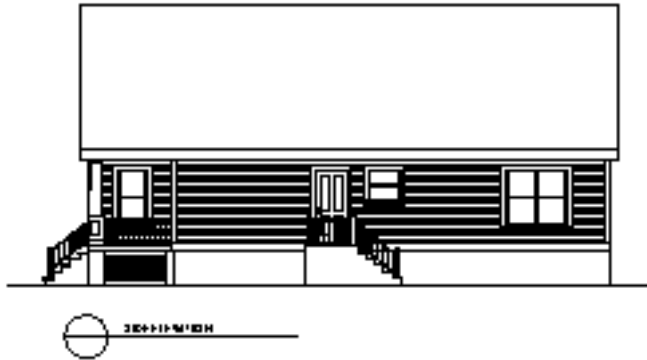


MANUFACTURED HOUSING INSTITUTE
 2101 Wilson Blvd
 Arlington
 Virginia 22201
 Tel 703 558-0400
 Fax 703 558-0401

MILWAUKEE, WI

MILWAUKEE	

appendix d.10



Susan Maxman & Partners
architects



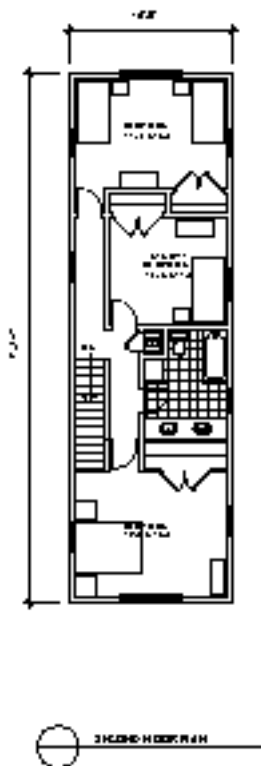
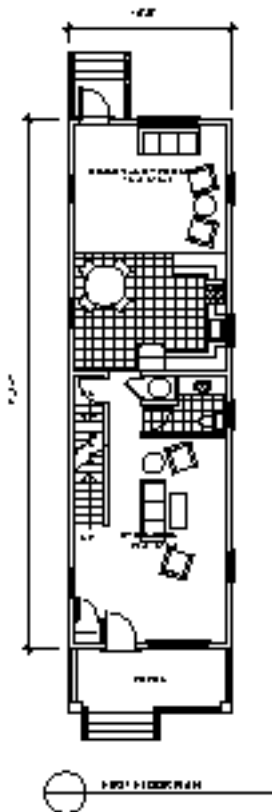
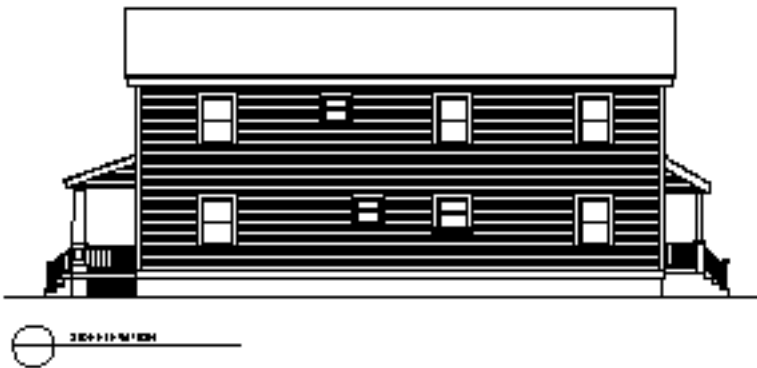
MANUFACTURED HOUSING INSTITUTE

2101 Wilson Blvd
Arlington
Virginia, 22201
Tel: 703 558-0400
Fax: 703 558-0401

MILWAUKEE, WI

MILWAUKEE	WI

appendix d.11



architects

Susan Maxman & Partners LLP



MANUFACTURED
HOUSING
INSTITUTE

2101 Wilson Blvd
Arlington
Virginia, 22201
Tel: 703 550-0400
Fax: 703 550-0401

MILWAUKEE, WI

MILV	

appendix d.12

architects

Susan Maxman & Partners Inc.



URBAN DESIGN PROJECT

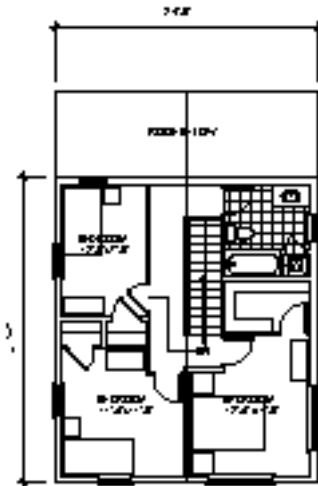
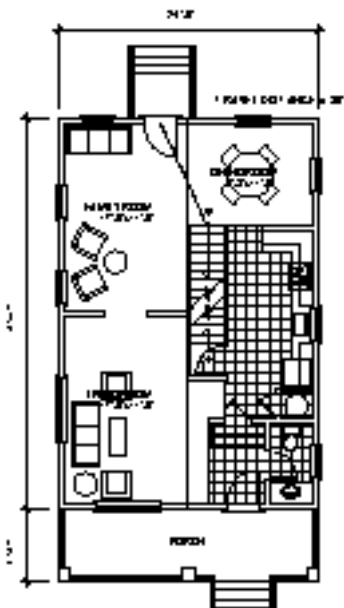
MANUFACTURED HOUSING INSTITUTE

2101 Wilson Blvd
Arlington
Virginia, 22201
Tel: 703 558-0400
Fax: 703 558-0401

MILWAUKEE, WI



1'-0" = 1'-0" ELEVATION



architects

Susan Maxman & Partners Inc.



URBAN
DESIGN PROJECT

MANUFACTURED
HOUSING
INSTITUTE

2101 Wilson Blvd
Arlington
Virginia 22201
Tel 703 558-0400
Fax 703 558-0401

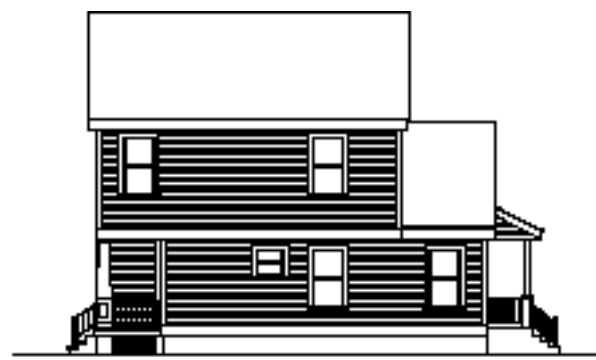
MILWAUKEE, WI

MILV

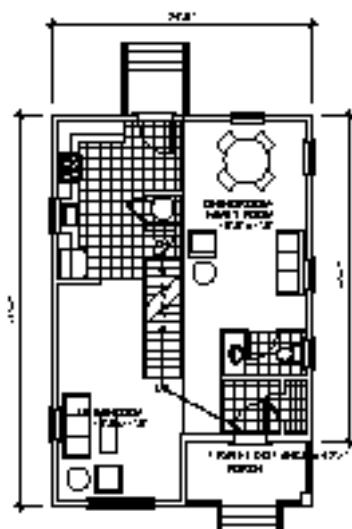
appendix d.15



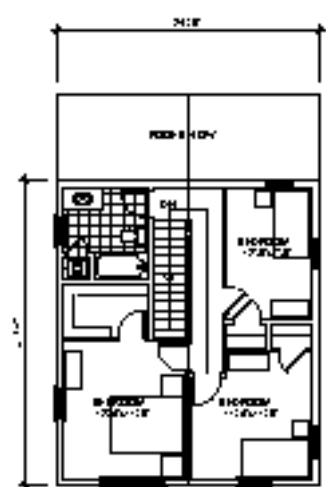
1020P 113'-0" ELEV



202P 113'-0" ELEV



1020P 113'-0" FLOOR PLAN



2020P 113'-0" FLOOR PLAN

architects

Susan Maxman & Partners Inc.



URBAN
DESIGN PROJECT

MANUFACTURED
HOUSING
INSTITUTE

2101 Wilson Blvd
Arlington
Virginia, 22201
Tel: 703 558-0400
Fax: 703 558-0401

MILWAUKEE, WI

MILV

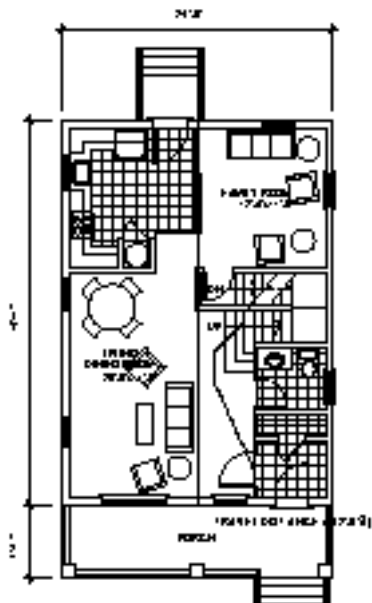
appendix d.16



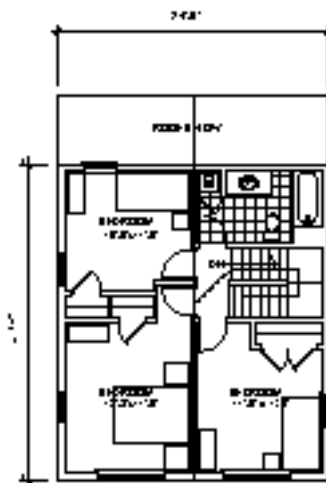
1-222' H. ELEVATION



2-224' H. ELEVATION



1-130'1" H. SECTION PLAN

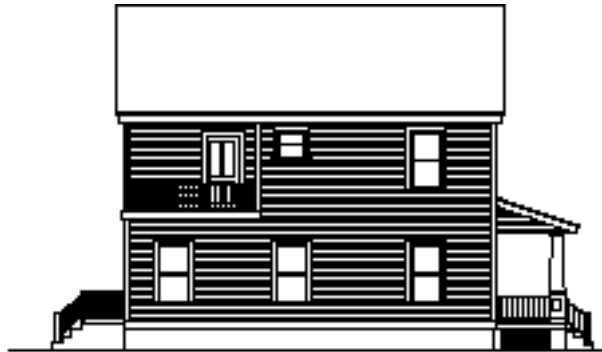


2-132'0" H. SECTION PLAN

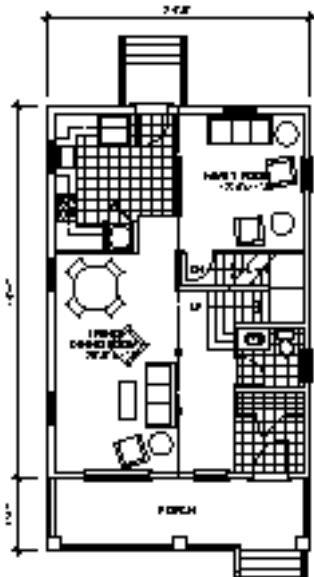


North
Side
Elevation

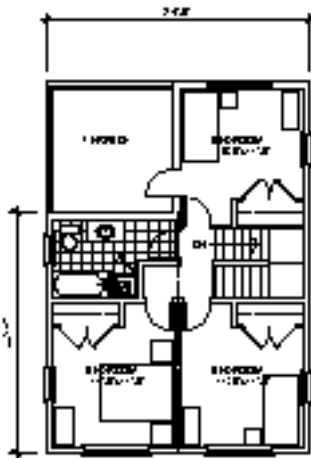
1-225P 11-14-10 Elevation



2-225P 11-14-10 Elevation



1-225P 11-14-10 Plan



2-225P 11-14-10 Plan

architects

Susan Maxman & Partners, Inc.

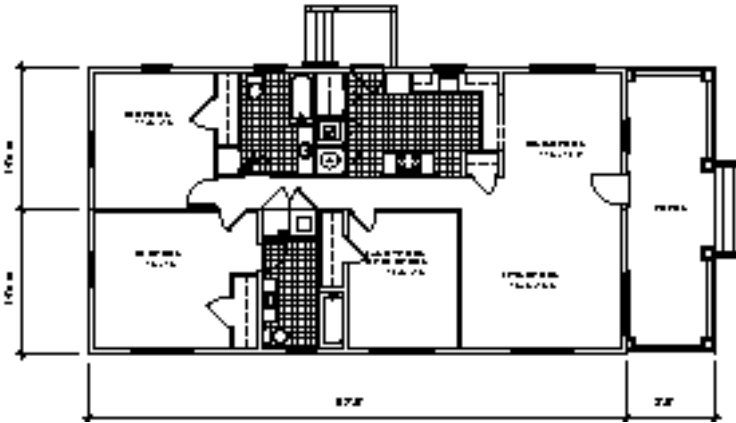
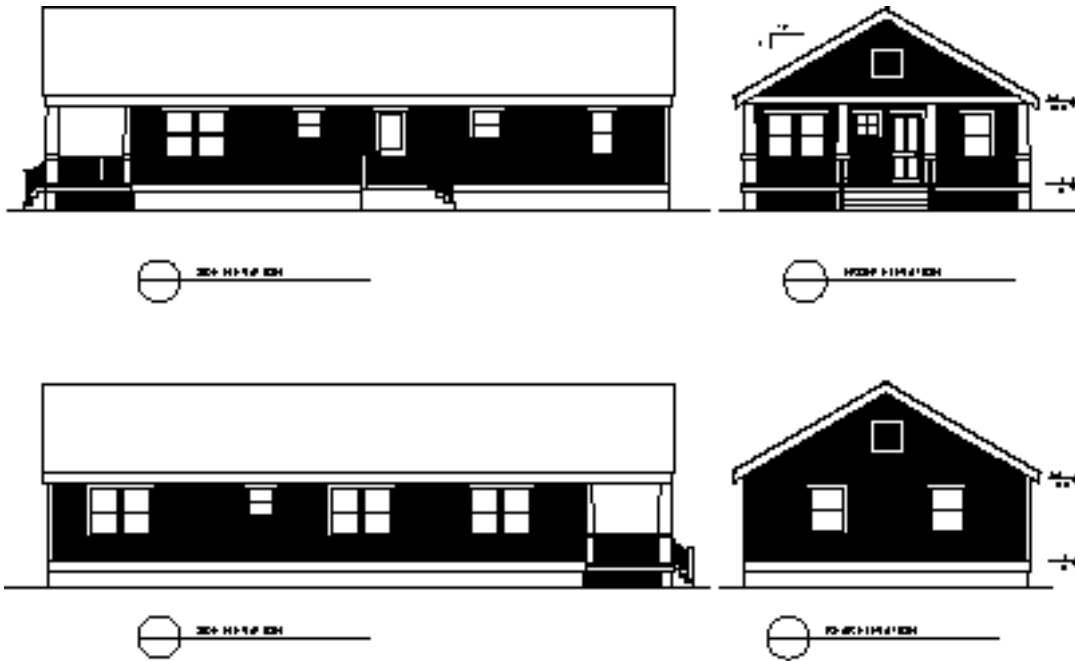


URBAN
DESIGN PROJECT

MANUFACTURED
HOUSING
INSTITUTE

2101 Wilson Blvd
Arlington
Virginia, 22201
Tel 703 558-0400
Fax 703 558-0401

MILWAUKEE, WI



Susan Maxman & Partners
Architects



MANUFACTURED HOUSING INSTITUTE

2101 Wilson Blvd
Arlington
Virginia, 22201
Tel: 703 550-0400
Fax: 703 550-0401

BIRMINGHAM, AL

BIRM	BIRM
	appendix e.2